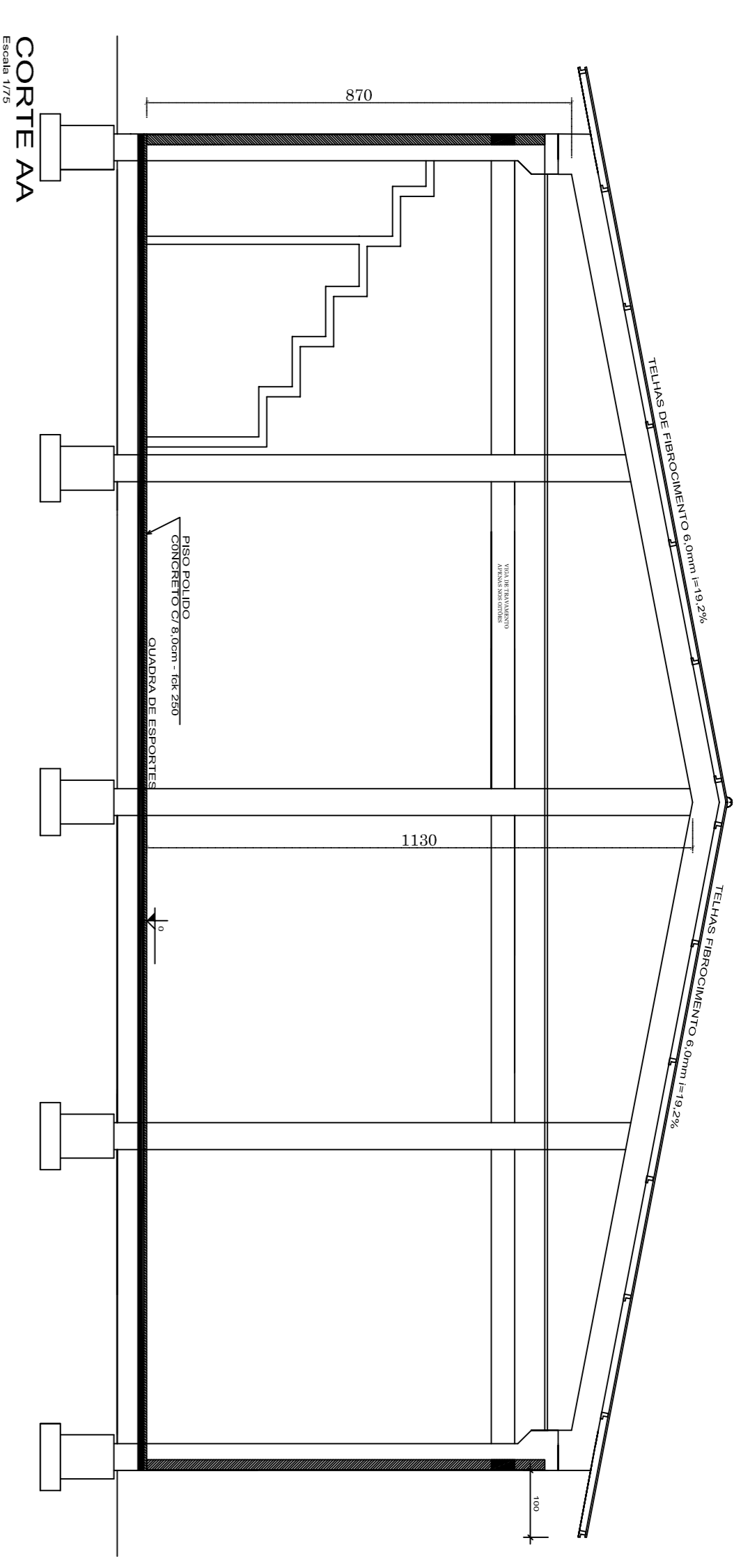
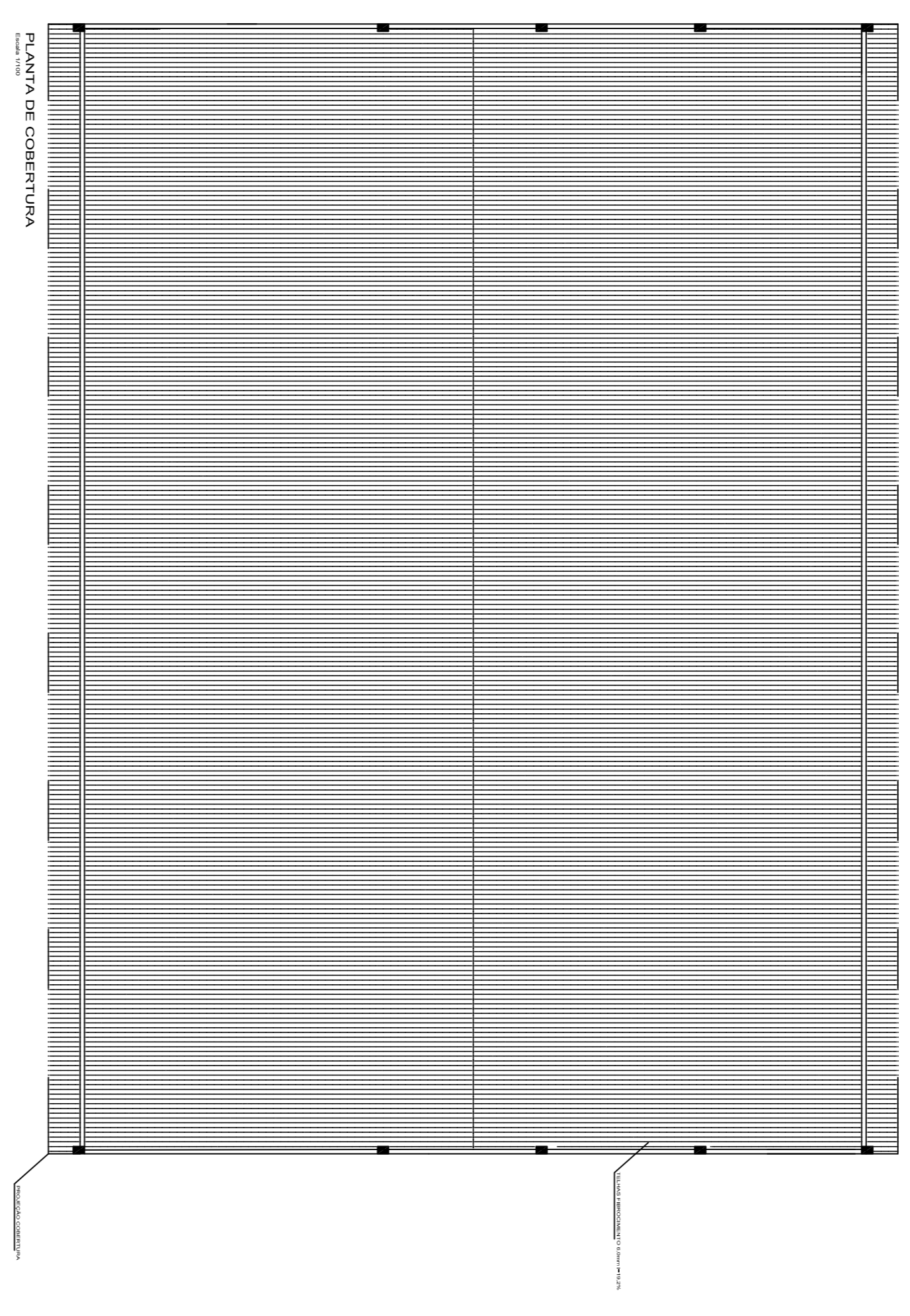
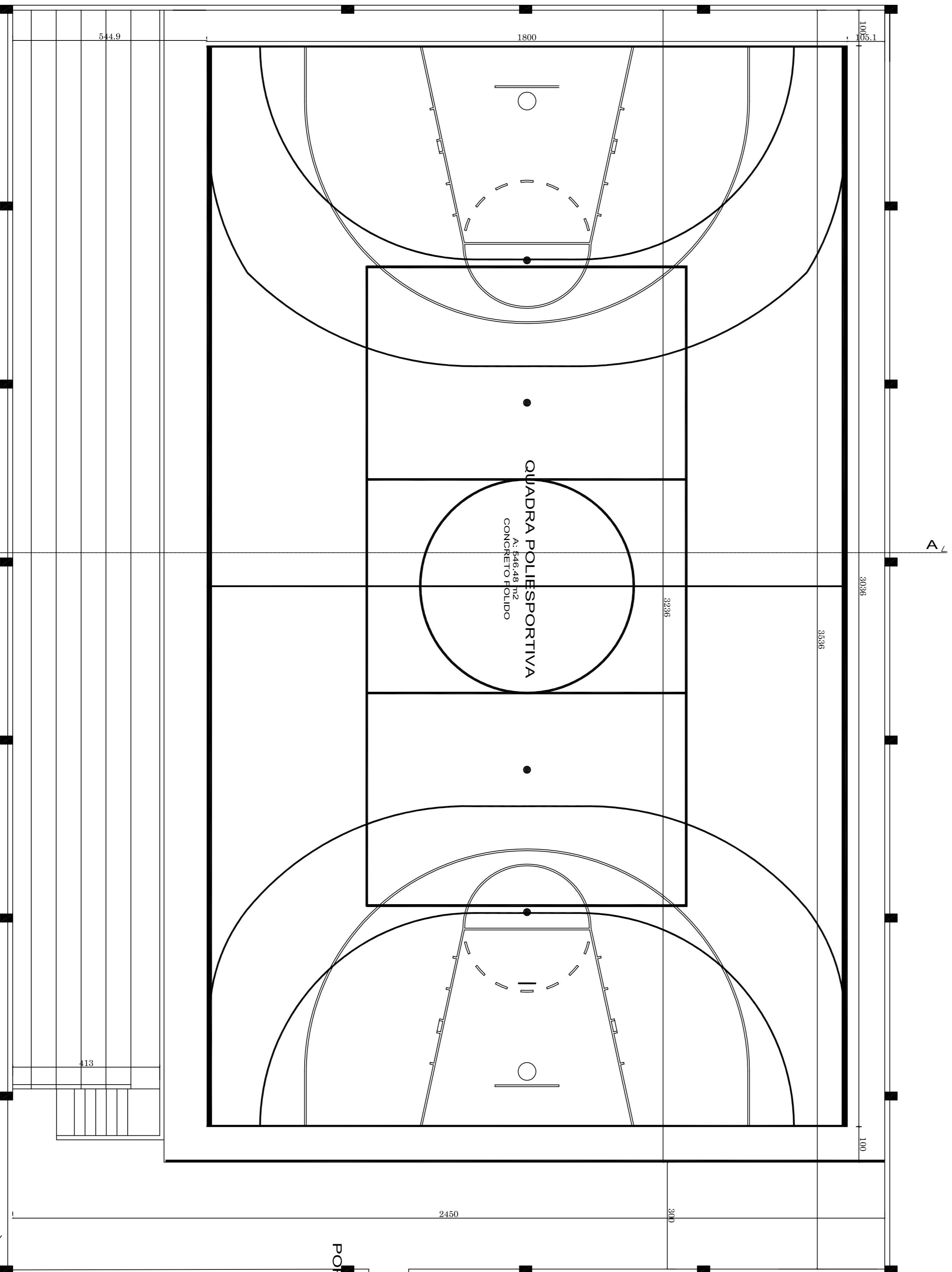


VISTA FRONTAL



CORTE AA



PLANTA DE COBERTURA

PREFEITURA MUNICIPAL DE LEOBERTO LEAL

ASSINATURAS

PROPRIETARIO

PROPRIETARIO: **GIORDANO BRUNO HEERDT**
 ENG. CIVIL CREA/SC 55884-3

PREFEITURA MUNICIPAL DE LEOBERTO LEAL

REFERENCIA: **PROJETO DE REFORMA DO GINÁSIO RIO DAS PEDRAS**

PROPRIETARIO: **PREFEITURA MUNICIPAL DE LEOBERTO LEAL**

LOCAL: **Estrada. Geral Rio das Pedras**

PROJETO: **GIORDANO BRUNO HEERDT**
 ENGENHEIRO CIVIL
 CREA/SC 144398-8

DATA: **DEZ / 2019**

FOLHA: **A01**

PLANTA BAIXA GINÁSIO
 883,16m²
 Escala 1/75

PORTA A SER SUBSTITUIDA POR VIDRO
 4,75x3,60